



CONSUMER PRODUCTS

INDUSTRIAL SOLUTIONS

E-BIKE

ANSMANN AG...

...your specialist for mobile energy solutions and e-bike technology.

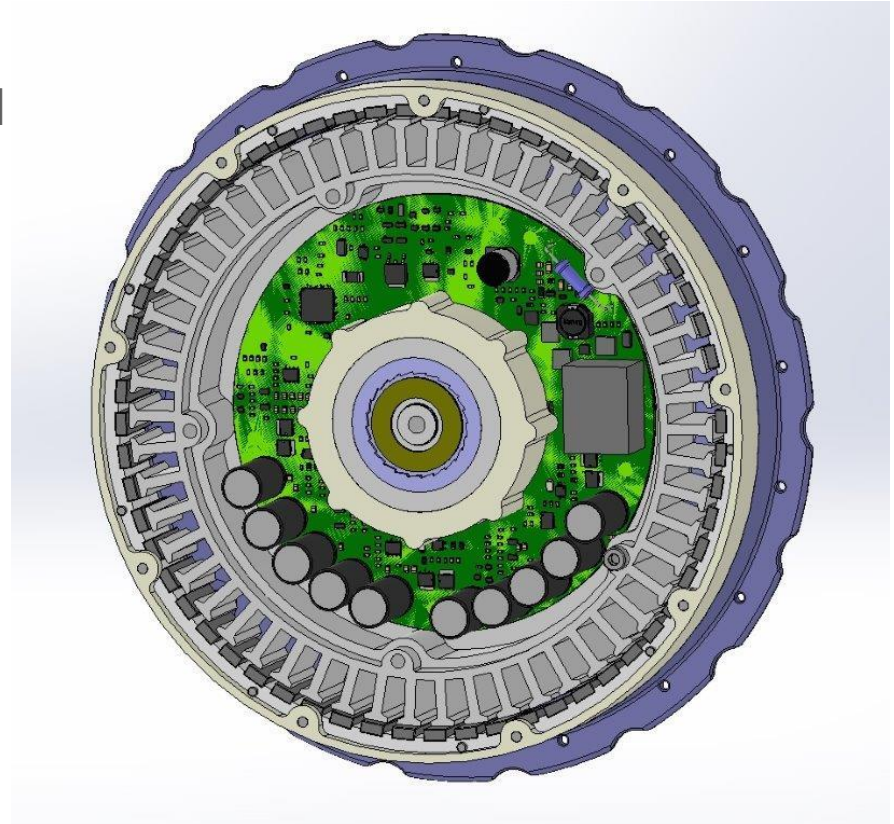
New Rear Wheel Motor Type RM7.0

- Gearless Direct Drive motor
- Lightweight
- Only 4kg weight
- Start assistance
- Torque 42Nm
- Noiseless



New Rear Wheel Motor Type RM7.0

- Electronic integrated, no external motor controller
- No overheat under constant maximum load
- CAN-BUS controller
- Analog controller
- Torque sensor
- 5 Drive levels
- 3 recuperation levels



New Rear Wheel Motor Type RM7.0

- Easy adjustment on the characteristics of the motor such as „sportive“, „touring“, etc. and maintenance

The screenshot shows the 'F-Bike Service Program 1.0.0.6' interface. It features several panels for adjusting motor parameters:

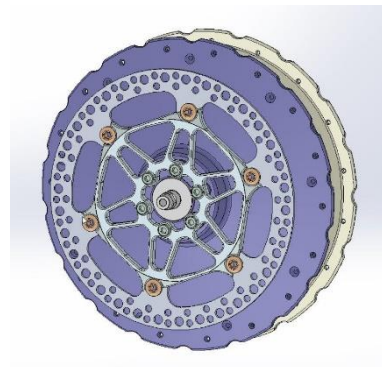
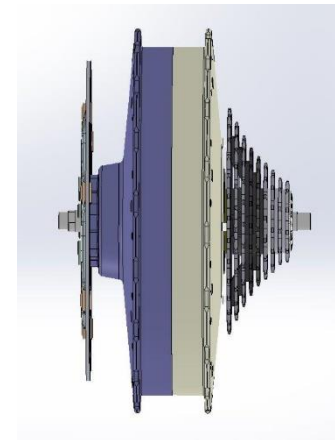
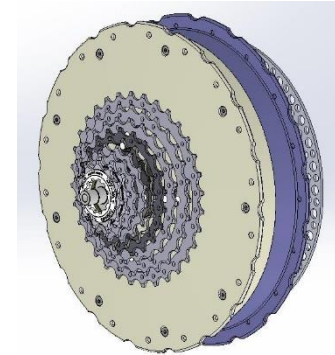
- Project:** Open, Save, Get, Set buttons.
- Calibration Parameters:** Min Value (1027), Max Value (1300), Difference (5), Correction (50), Deviation (50).
- Speed Limit:** On/Off (checked), Min Speed (25), Max Speed (27), Tire Diameter (2268).
- Torque Limit:** Eco (60), Eco+ (60), Normal (60), Normal+ (60), Power (100).
- Torque Coefficient:** Eco (2), Eco+ (5), Normal (7), Normal+ (9), Power (12).
- Torque Step:** FWD (50), REV (10).
- Filters:** Current (5), Torque (5).
- Recuperation:** Current (3000), Off Speed (8), On Speed (12).
- Calibration:** Const (-1), QUEUE, State, Start button.
- Errors:** Over Temp (0), Under Volt (0), Over Volt (0), Current Prot (0), Start Up Dur (0), Start Up (0), Speed Fdbk (36), Software (0), Encoder (53), Enc Val (0), Enc Dif (4), Enc Dev (0).
- Log Table:**

#	Time	Event
1	12:10:50	Get Parameters: OK
2	12:10:52	Calibration is started
3	12:10:55	Get Errors: OK
- Buttons:** Clear, Reset.
- Right Panel:** Debug, Get, Set, Clk, Flash.

- Easy adjustment for OEM`s

New Rear Wheel Motor Type RM7.0

- Compatible to 8-,9- and 10 cassettes
- Compatible to disc brakes from 140mm
- Maintenance free



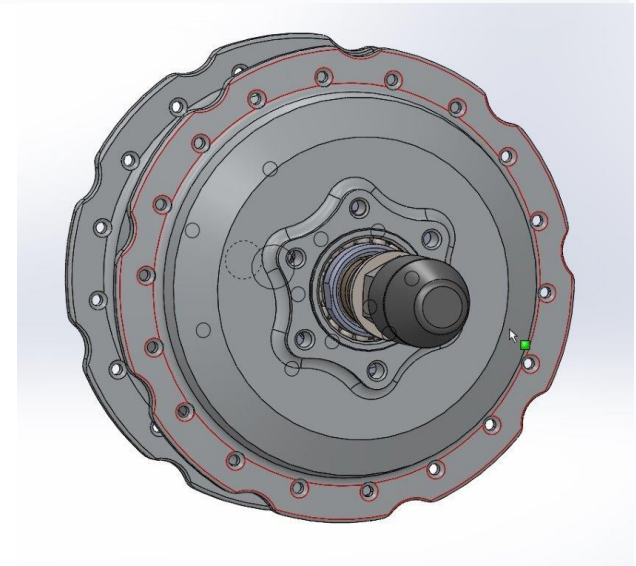
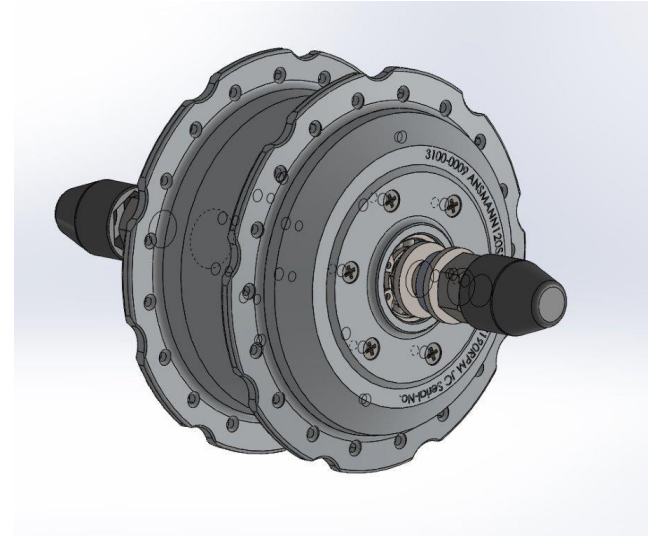
New Rear Wheel Motor Type RM7.0

- CAN BUS Display with 5 power levels, 3 recuperation levels, 6 bike functions and range calculation depending on the drive situation.
Backlight
USB connection for Smartphone, etc.
- ANT+ Display (wireless) with 5 power levels, 1 recuperation level, 5 bike functions, Backlight
optional heart rate monitor or cadence monitor



New Front Wheel Motor Type FM2.0

- Extreme light
- Only 2,5kg
- Very small, only 120mm diam.
- Disc brake compatibel
- High efficient and maintenance free



New Front Wheel Motor Type FM2.0

- Noiseless
- No special frames needed, perfect for deep entry bikes
- Mechanical freewheel clutch, no mechanical resistance from motor system perfect for sportive bikes
- Optimised start traction



QUESTIONS ?



**THANK YOU
FOR YOUR ATTENTION!**